

INSTALLATION & OPERATION MANUAL

CRMA 50/63

Power Cord Retrieval & Storage System

The CRMA Cordreel has been designed for manual pay out and motorized retraction of your shore power cable.

The Cordreel can store 50amp 125/250 volt shore power cable and European 63amp 250volt shore power cable.

Table of Contents

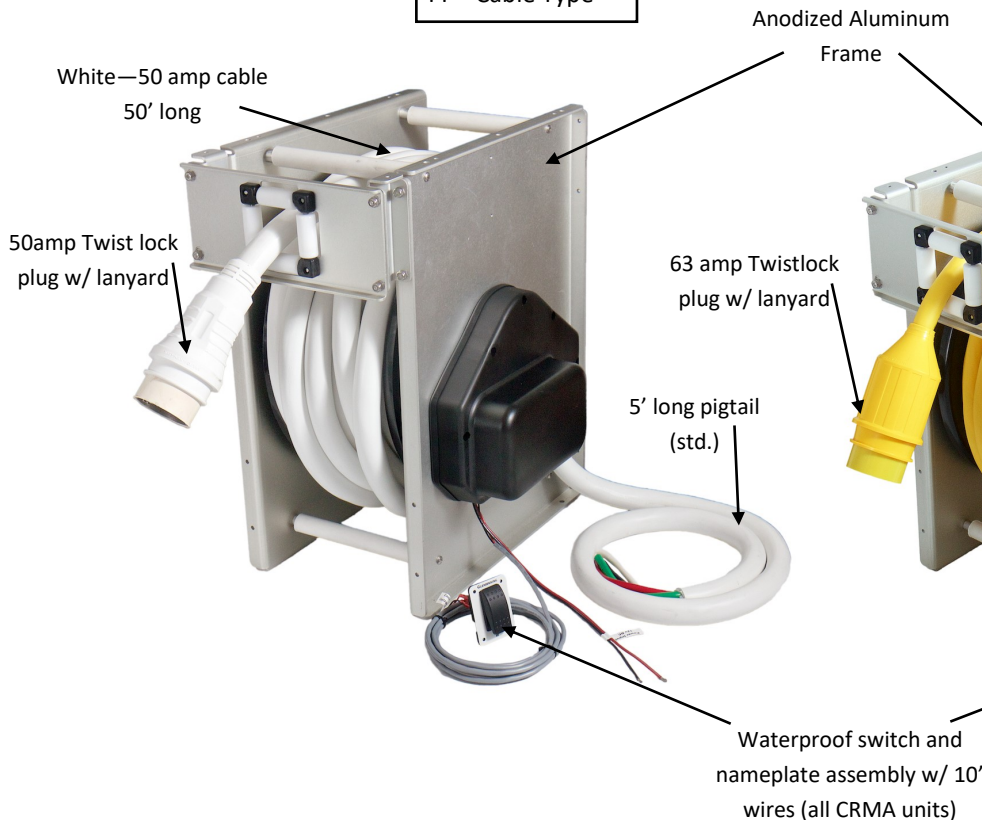
- 1) Product Description
- 2) Product Dimensions
- 3) Installation
- 4) Operating Instructions
- 5) Maintenance
- 6) Troubleshooting
- 7) Accessories

1.0 PRODUCT DESCRIPTION

CRMA 50

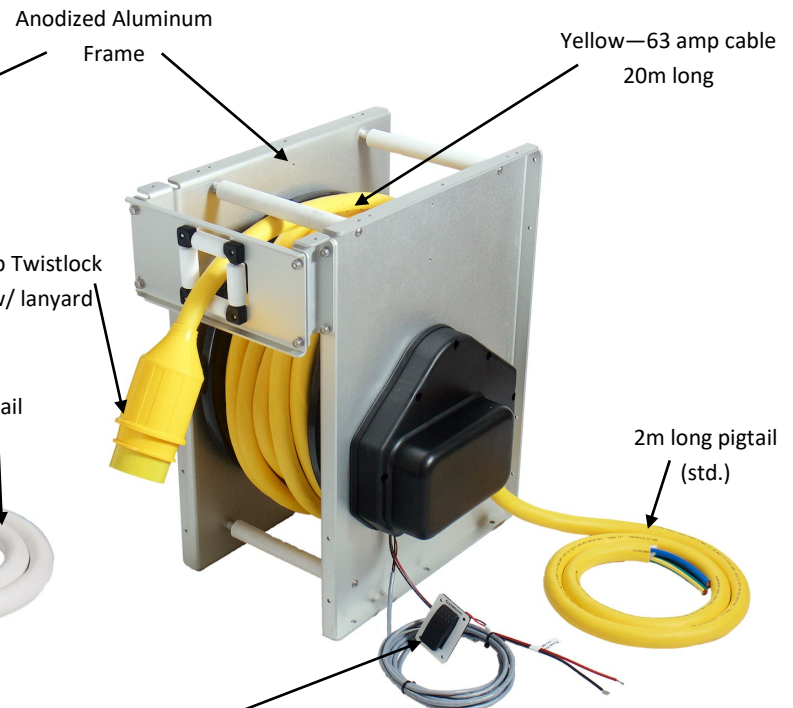
CRMA50-XX-YY

XX – DC voltage
YY—Cable Type



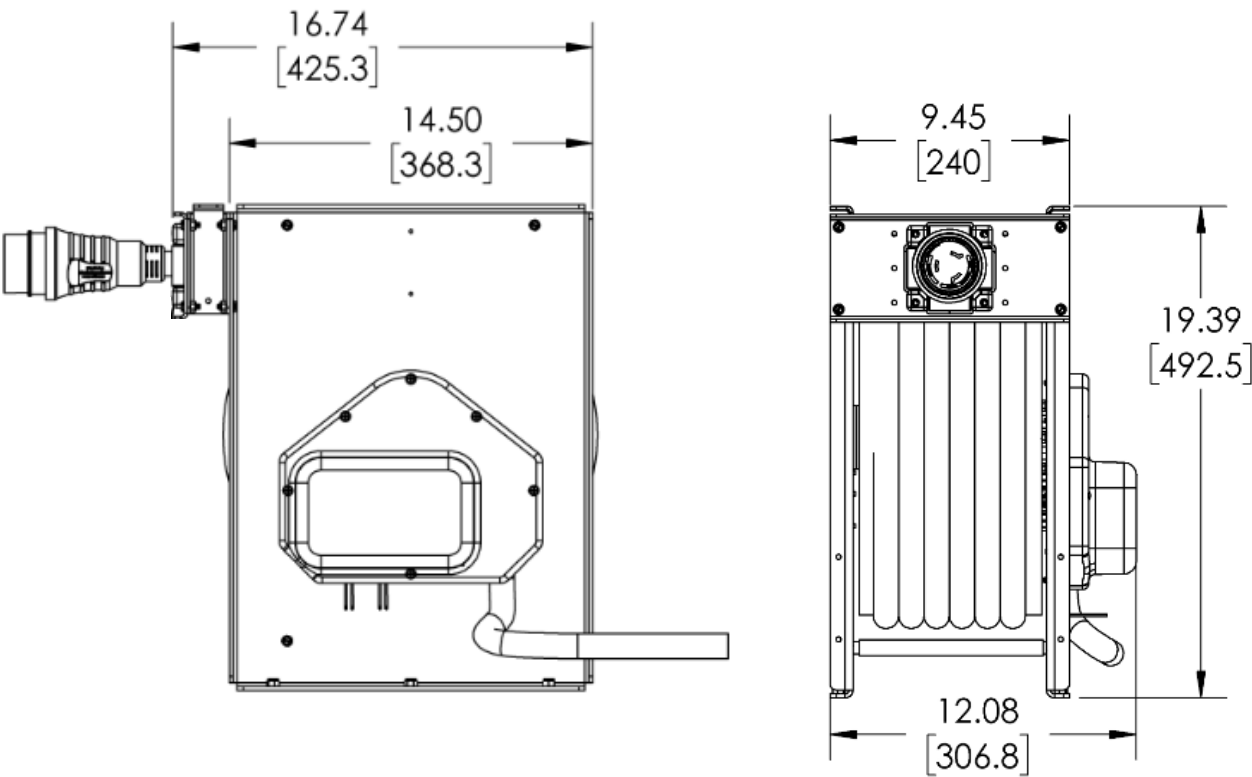
CRMA 63

CRMA63-XX-YY

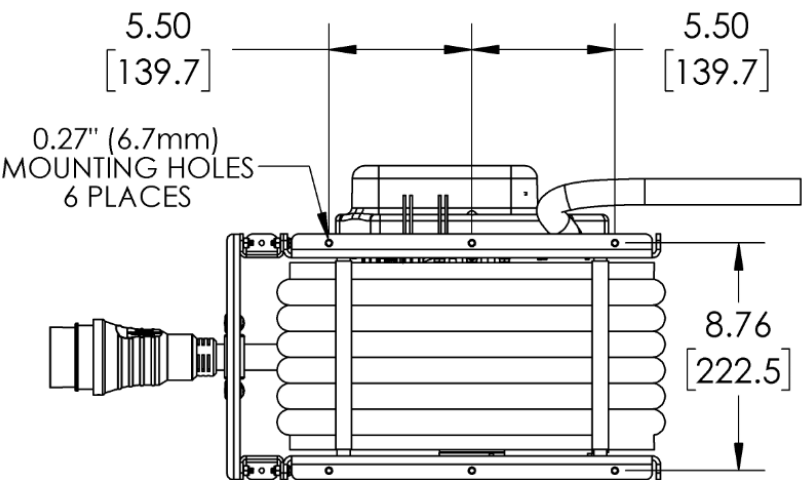


2.0 PRODUCT DIMENSIONS

CRMA 50/63



Weight:
(w/ 6/4 cable)



3.0 CORDREEL INSTALLATION

3.1 Before You Start the Installation

The most important part of your installation is planning the best layout for the shore power cable routing from the unit to where it exits the boat (normally through a Hawse Pipe). Be sure that cable is routing a straight path, free from any obstacles. If the cable exit is not in line with the center of the reel, it is very possible the cable will wrap on the side of the reel closest to the exit and could bind during retraction. There are some accessories you can purchase to help if there is no way to center the exit to the Cordreel. (See section 7 for accessories.) Also make sure that Cordreel is installed in a place where it is protected from the environment.

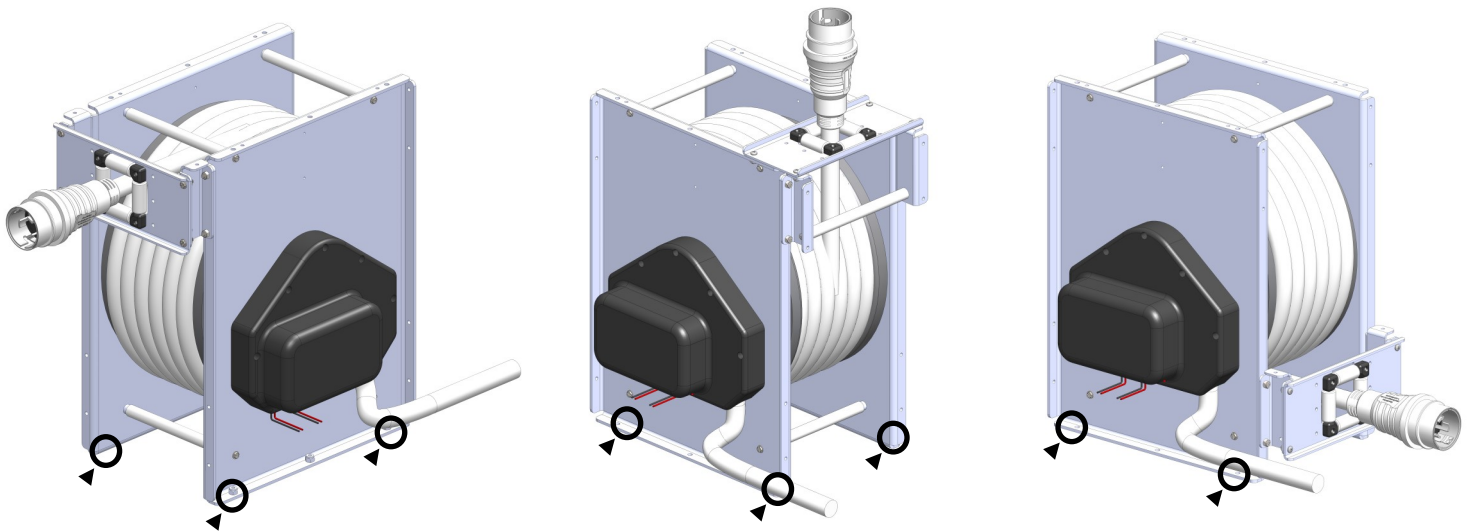
3.2 Installation Configurations

The Cordreel (50/63) is capable of being mounted in multiple configurations:

Front Mount (std. configuration)

Top Mount

Rear Mount



3.3 Mounting Instructions

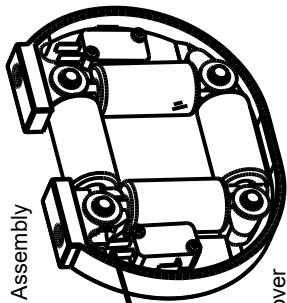
- The Cordreel will be mounted to either the floor or the overhead of the compartment where it will be located. If on the overhead, proper support bracketing must be provided by installer.
- Allow clearance for the Cordreel storage spool to operate freely without obstruction or interference, and for the connection of the power cable from your power supply.
- Install the Cordreel using 1/4" bolts, 1" long minimum. Bolt unit in each of the four corners. See above for bolting locations. Look for ►○

NOTE: Unspooling the power cord before mounting the Cordreel can aid installation in tight spaces.

3.4 Wiring Diagram

OPTIONAL

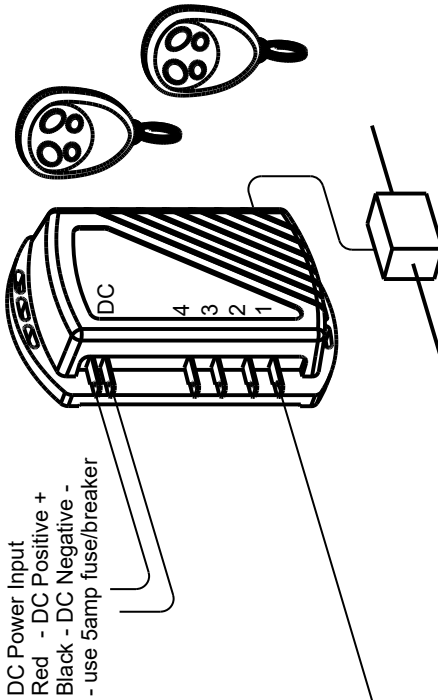
Guide Roller In-Limit Switch Assembly
Part# 04862-x



- Installation:
- remove CRMA50 ac/motor cover
 - select 12" long brown wire loop
 - cut wire in half and splice into each Out-Limit switch Assembly wire.
 - replace CRMA50 cover

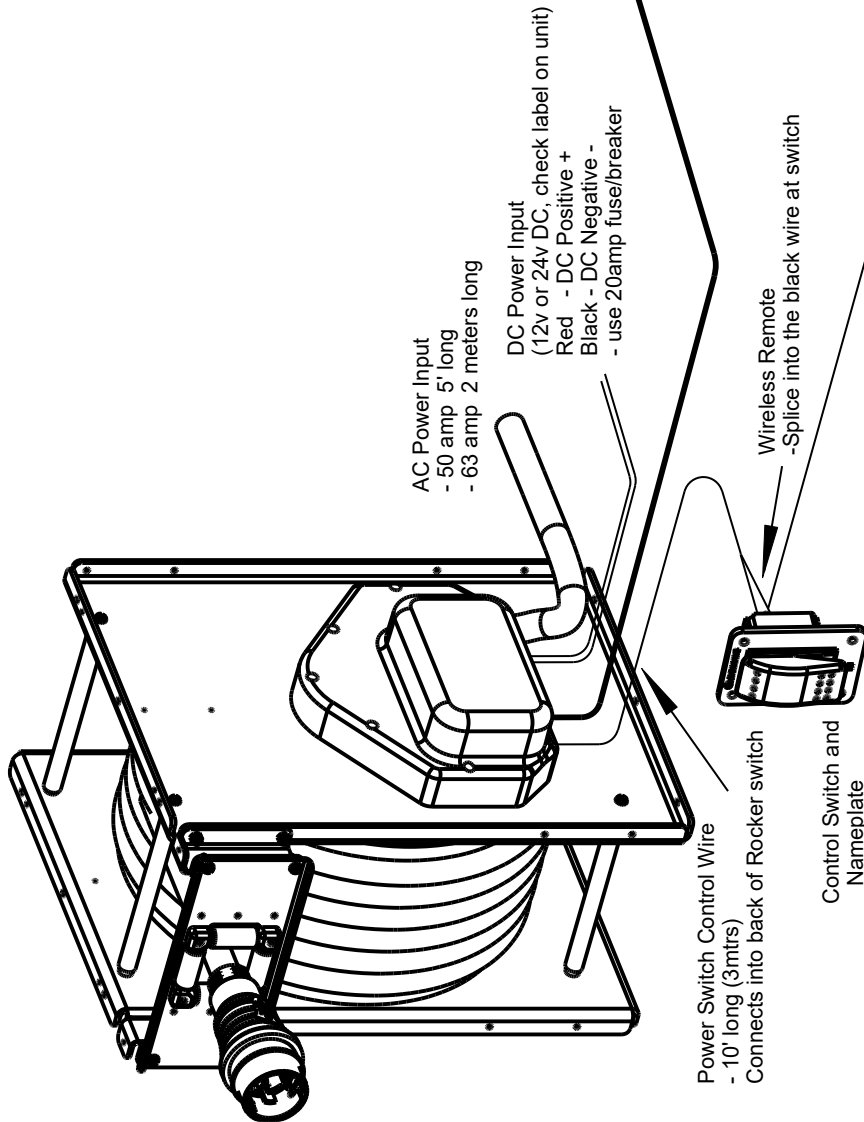
OPTIONAL

Wireless Remote Control
Part# 04154 12/24v Remote



- DC Power Input
Red - DC Positive +
Black - DC Negative -
- use 5amp fuse/breaker

Remote Antenna
- antenna must be mounted horizontally and connected to the receiver for proper operation of the remote.



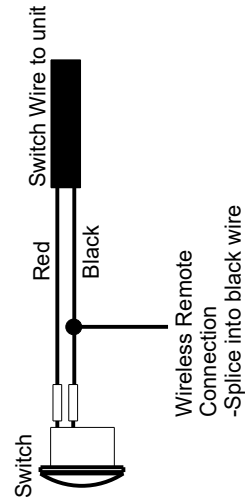
AC Power Input
- 50 amp 5' long
- 63 amp 2 meters long

DC Power Input
(12v or 24v DC, check label on unit)
Red - DC Positive +
Black - DC Negative -
- use 20amp fuse/breaker

Wireless Remote
-Splice into the black wire at switch

Power Switch Control Wire
- 10' long (3mtrs)
Connects into back of Rocker switch

Control Switch and
Nameplate



Wireless Remote
Connection
-Splice into black wire

3.5 Installing the Hawse Pipe (optional accessory)

The installation of the Hawse Pipe is optional. You may also use your existing Hawse Pipe or any storage space door that is accessible to where you select the power cord to exit.

- Before drilling or cutting, be certain that the area behind the Hawse Pipe is free of wires, plumbing or structural supports.
- Mounting surface should be a minimum of 1/2" thick. Proper thickness may be achieved by using a butt block of marine-grade plywood behind the mounting surface.
- Mount Hawse Pipe.

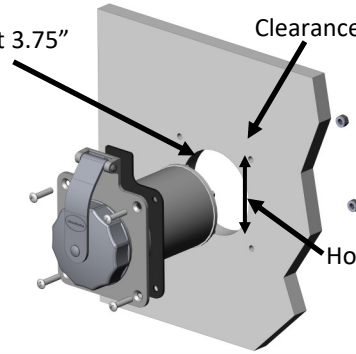
Part#:

04079-CRM — Hawse Pipe w/ Guide Roller Assembly
04079-CRM-LS — Hawse Pipe w/ Guide Roller In-Limit Switch Assembly

Hole cut out 3.75" diameter

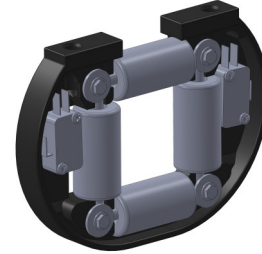
Clearance hole 17/64

Holes 4" apart



Part#

04862-X — Guide Roller In-Limit Switch Assembly



3.6 Connect AC Power to Cable

50amp 125v AC

Black - Line 125VAC
White - Neutral
Green - Ground

50amp 125/250v AC

Black - Line 1 125v AC
Red - Line 2 125v AC
White - Neutral
Green - Ground

50amp 125/250v AC w/ Isolation Transformer

Black - Line 1 125v AC
Red - Line 2 125v AC
Green - Ground

63amp 250v AC

Brown - Line 125AC
Blue - Neutral
Green - Ground

The "pigtail" that comes on the Cordreel must be connected to the junction box or power switch that supplies 125v or 250v to the boats electrical system.

- Strip the insulation from the end of the "pigtail" as well as the green, white, black, and red wires within the insulation jacket.
- Attach appropriate connectors to each wire and attach to the junction box.

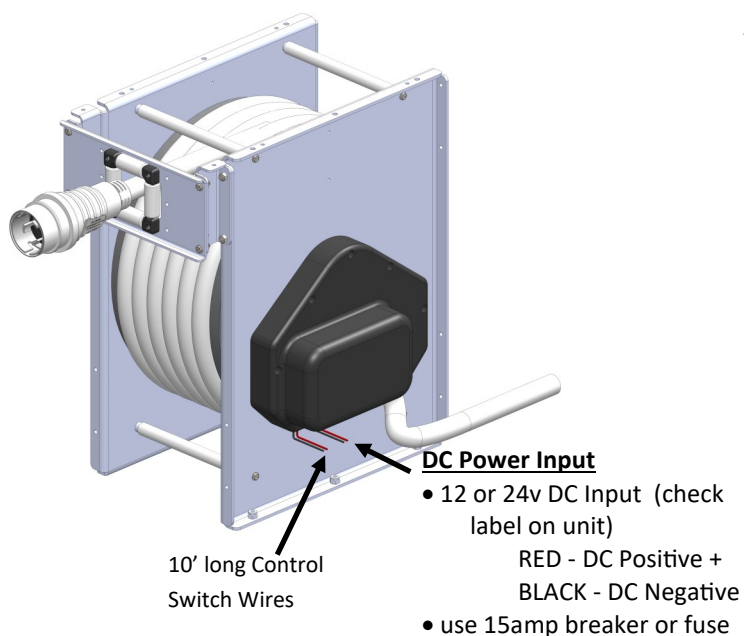


WARNING:



- All wiring should be done in accordance with ABYC's standards. If you are unsure of these standards, consult a qualified electrician.
- Failure to wire correctly may result in DEATH, INJURY OR DAMAGE TO PERSONS, VESSELS, OR UNIT. Terminals are marked for correct wiring: HIT, NEUTRAL, & GROUND.

3.7 DC Wire Connection



The Cordreel comes with (2) 14 gauge wires exiting from the gear motor cover.

- These wires should be connected to the 12 or 24 VDC power source depending on unit purchased (see label on unit for correct voltage).
- Connect wire to DC battery as shown to left.
- Make sure all connections are secured and protected from the environment.



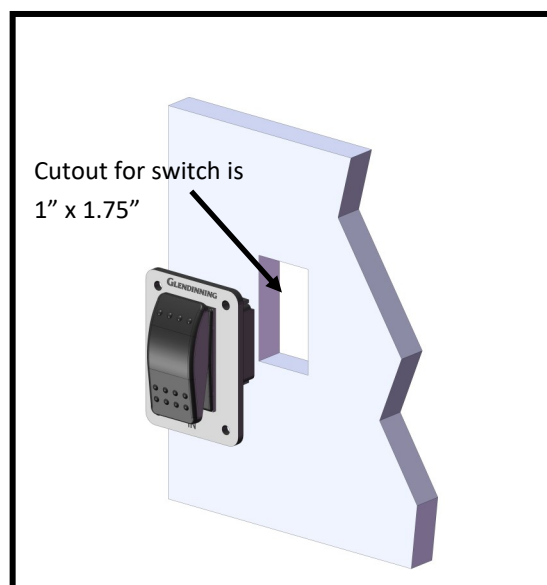
WARNING:



- All wiring should be done in accordance with ABYC's standards. If you are unsure of these standards, consult a qualified electrician.

3.8 Control Switch

- Mount the control switch near where the cable exits the side of the boat.
- Connect red quick connector terminal to the tabs on the control switch.



4.0 OPERATING INSTRUCTIONS

To operate your Cordreel:

- **PULL OUT** only the amount of shore power cord required to reach the outside power source.
- **CONNECT** your shore power cord to outside power source receptacle.
- **TURN ON** outside power supply.

When ready to get underway:

- **TURN OFF** outside power supply.
- **DISCONNECT** cord from the outside power supply.
- **PUSH AND HOLD** the Cordreel power switch (black rocker switch). Cordreel will electrically retrieve the power cord and store.
- When cord is fully retracted, **RELEASE** the power switch to stop the unit. NOTE: Not releasing the switch may cause the plug to get jammed in the unit and make the next use difficult.



CAUTION:

- Always disconnect AND fully retract your cable BEFORE getting underway!
- Continuing to push power button after cable is retracted may cause damage to the motor and will cause breaker switch to trip - reset before next use.

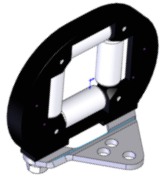

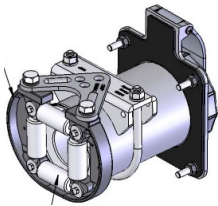
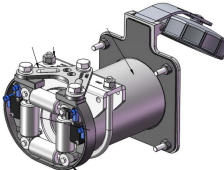
5.0 MAINTENANCE

- **TO RELIEVE ANY KINKING** that may happen Routinely extend the power cable completely, stretch it on any flat surface, and allow the Cordreel to retract the cable into the reel.
- **INSPECT ALL AC AND DC WIRING CONNECTIONS** and make sure they are free of corrosion and connections are tight.
- **INSPECT THE EXTERIOR JACKET** of the power cable for nicks or cuts.
- **IF YOUR POWER CABLE IS DIRTY**, any cleaner should be compatible with the outer jacket material of the power cable.
- **IF NEEDING TO REPLACE POWER CORDSET**, USE ONLY 90°c or preferable 105° c MINIMUM RATED CORDSETS and ensure that the outside diameter of the new cordset does not exceed that of the factory supplied cordset. Maximum cordset length is 82’ (25m) of the correct outside diameter cord.

6.0 TROUBLESHOOTING

ISSUE	PROBABLE CAUSE	RECOMMENDED ACTION
Non-functional (either no power or unit has power and does not respond)	Tripped breaker Blown fuse at power source Power wire incorrectly connected to power source Defective motor	Reset breaker Replace fuse Check power source fuse and connections, reconnect or replace if necessary With power switch on and voltage across motor wires — if no response, replace motor
Cordreel stops retracting while button is being pushed	Cord jammed during retraction causing breaker to trip	Reset breaker Pay out cable and rewind

7.0 ACCESSORIES

PART#	Description	
04054	Guide Roller Assembly with Plate	
04154	Remote Control System 12/24V, Includes (2) transmitters, (1) receiver, (1) antenna, and (1) wire harness	
04079-CRM	Stainless Steel Hawse Pipe w/ Guide Roller Assembly	
04079-CRM-LS	Stainless Steel Hawse Pipe w/ Guide Roller Assembly and Limit Switch	

WARRANTY

PRODUCT COVERED BY THIS LIMITED WARRANTY: CRMA50/63

1. GLENDINNING PRODUCTS, LLC. warrants to the original consumer purchaser that the CRMA 50/63 will be free from defects in material and workmanship under normal use and service for a period of one (1) year from the date of purchase.
2. This LIMITED WARRANTY applies to defects in material and workmanship. It does not apply to plated or painted finishes or to cord damage caused by inadequate cable storage area or installation not in accordance with GLENDINNING PRODUCTS, LLC. specifications.
3. This LIMITED WARRANTY is void if the product has been damaged by accident or unreasonable use, neglect, improper installation, or other causes not arising out of defects in material or workmanship.
4. To obtain performance of this LIMITED WARRANTY obligation the original purchaser should contact GLENDINNING PRODUCTS, LLC. for instructions concerning removal and shipping of the defective component. Upon compliance of the foregoing procedure all warranted defects will be repaired, or at GLENDINNING PRODUCTS, LLC. option, the complete unit replaced and returned to the consumer, shipping charges prepaid.
5. GLENDINNING PRODUCTS, LLC. does not assume the costs of removal and/or installation of the product or any other incidental costs which may arise as a result of any defect in materials or workmanship.

THIS WARRANTY IS IN LIEU OF ALL OTHER EXPRESS WARRANTIES. ANY WARRANTY IMPLIED BY LAW INCLUDING WARRANTIES OF MERCHANTABILITY OR FITNESS, IS IN EFFECT ONLY FOR THE DURATION OF THE EXPRESS WARRANTIES SET FORTH IN THE FIRST PARAGRAPH ABOVE. NO REPRESENTATIVE OR PERSON IS AUTHORIZED TO GIVE ANY OTHER WARRANTY OR TO ASSUME FOR GLENDINNING PRODUCTS, LLC. ANY OTHER LIABILITY IN CONNECTION WITH THE SALE OF IT'S PRODUCTS. GLENDINNING PRODUCTS, LLC. WILL NOT BE LIABLE FOR ANY CONSEQUENTIAL DAMAGES RESULTING FROM THE USE OR INSTALLATION OF IT'S PRODUCTS.