



CABLEMASTER™ Model CRM-50

- **EASY TO USE** — Simply pull out the amount of shore power cable you need to make your connection. Push the button and the cable will retract and store on the reel.

- **“ZERO EFFORT” PULL-OUT FORCE** — Our patented drive motor mechanism disengages itself when the cable is extended. No heavy pulling!

- **COMPACT STORAGE**

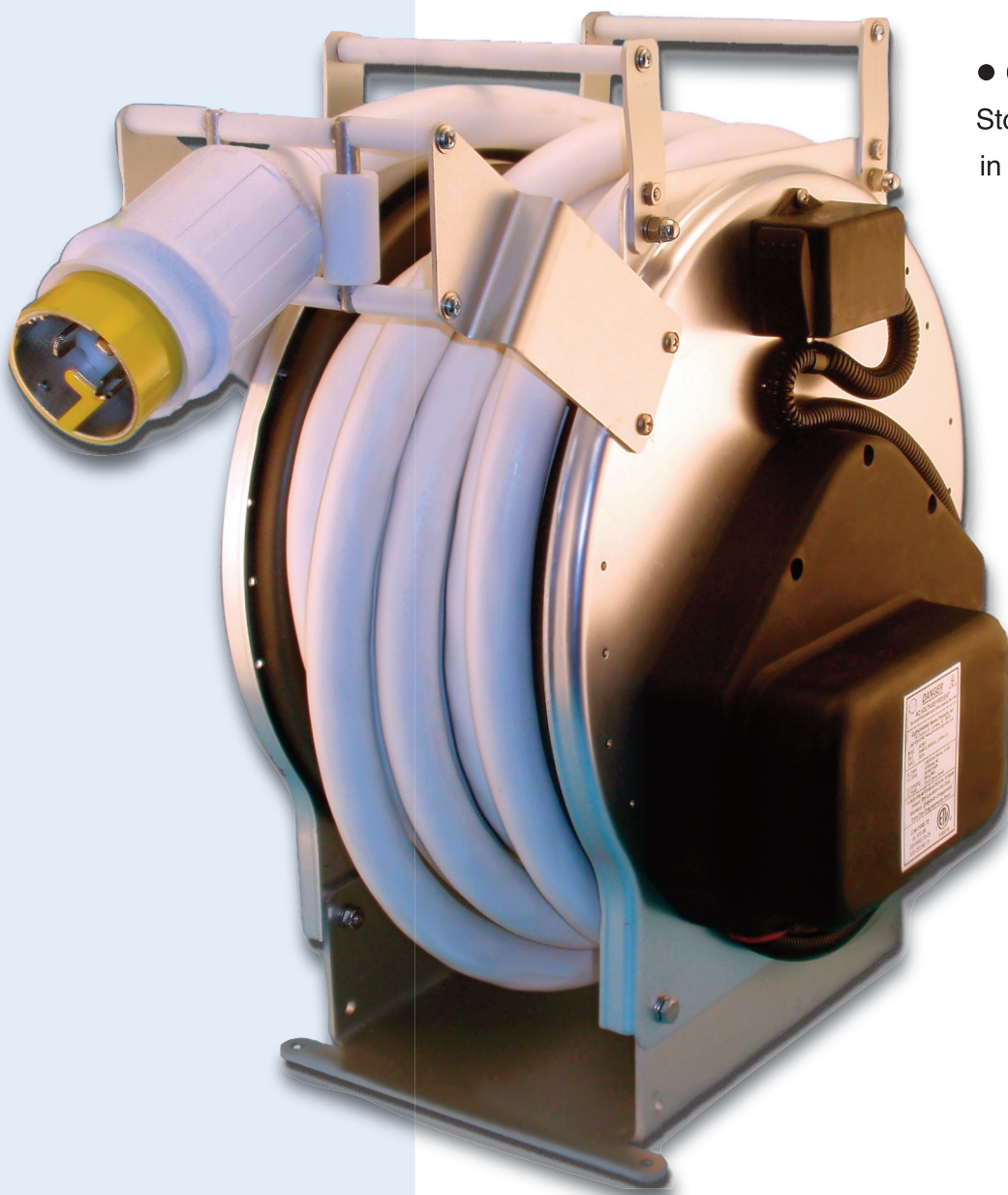
Store up to 60 feet of 50 amp cable in the smallest possible area.

- **EASY TO INSTALL**

Deck, bulkhead or overhead mounting options. Adjustable roller assembly allows for various cable exit locations.

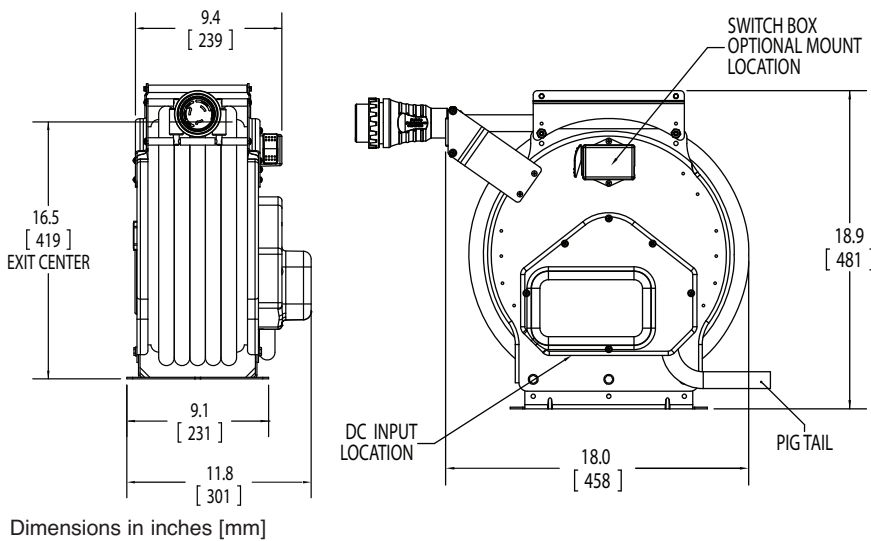
- **MARINE GRADE DESIGN**

The Cablemaster product line is specifically designed for the marine environment — built to last!



“Extend . . . Retract . . . Relax!”

CABLEMASTER™ — MODEL CRM-50 SPECIFICATIONS



VOLTAGE:12 or 24 VDC
OPERATING CURRENT: 5-7 amps nominal
 15 amp peak load
CABLE SPECIFICATIONS: #6 AWG
 3 or 4 conductor
 105°C temperature rating
 125 / 250 VAC
PLUG SPECIFICATIONS: Molded on Cable
 125/250 VAC Twist Lock
WEIGHT: 62 lbs.
 (equipped with 50 ft. of 6/4 cable)
CERTIFICATIONS: tested to comply
 with UL standard 355
 tested for ignition protection
 meets all CE requirements

Part No.	Cable Type Installed	Cable Color ¹	Cable Length	Motor Voltage
CRM50-12-63W	#6 AWG / 3 conductor (50 amp rating) ²	White	50 feet	12 VDC
CRM50-12-63W60	#6 AWG / 3 conductor (50 amp rating) ²	White	60 feet	12 VDC
CRM50-12-64W	#6 AWG / 4 conductor (50 amp rating)	White	50 feet	12 VDC
CRM50-12-64W60	#6 AWG / 4 conductor (50 amp rating)	White	60 feet	12 VDC
CRM50-24-63W	#6 AWG / 3 conductor (50 amp rating) ²	White	50 feet	24 VDC
CRM50-24-63W60	#6 AWG / 3 conductor (50 amp rating) ²	White	60 feet	24 VDC
CRM50-24-64W	#6 AWG / 4 conductor (50 amp rating)	White	50 feet	24 VDC
CRM50-24-64W60	#6 AWG / 4 conductor (50 amp rating)	White	60 feet	24 VDC

Notes: 1) Yellow cable jackets are also available.
 2) #6 AWG x 3 cables are suitable for use with isolation transformer applications. Cable conductors are black/red/green with black and red connected to 250 VAC connections.

OPTIONAL FEATURES / ACCESSORIES:

- **PRE-WIRED FOR CONNECTION TO AC DISTRIBUTION PANEL**

Provides a length of boat wire that is pre-terminated to the cord reel, which can then be used for connecting to the A/C distribution panel.

- **HAWSE PIPE FOR CORD EXIT** — provides a watertight exit for the power cord through the bulkhead. Various styles and types are available from plastic to stainless steel.



Stainless Steel
 Hawse Pipe
 P/N 04079-CRM



For more information, contact our sales engineer or your local dealer today!

740 Century Circle
 Conway, SC 29526

Phone: (843) 399-6146
 Fax: (843) 399-5005



**MADE IN
 THE USA**

www.glendinningprods.com

SML-CRM50B_v2.0