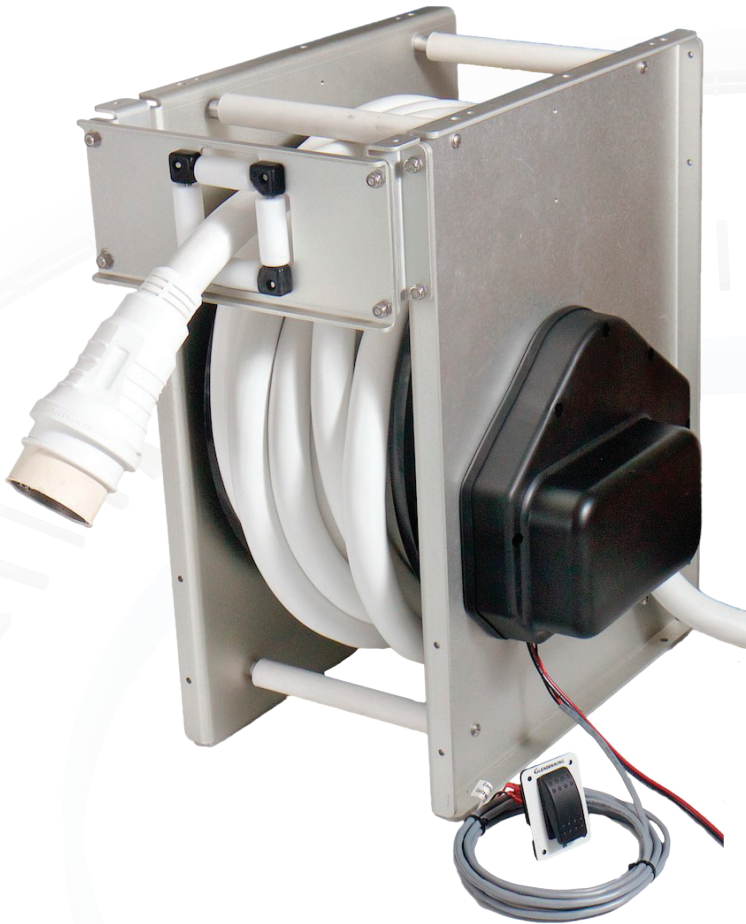


# CABLEMASTER™ - CRMA50/63

## Handling and Storage System for Shore Power Cable



### CRMA Cablemaster units, take all the work out of managing your boats shore power cable.

These self contained "ready to fit" systems feature an innovative clutch mechanism that allows the storage reel to "free wheel" making it easy and quick to use - simply pull out whatever length of shore power cable is required, and when its time to retract the cable, press and hold the control switch (supplied) to engage the powerful DC motor (12v or 24v) that will effortlessly retract the cable and re-store it on the reel.

Optional accessories available include a waterproof hawse pipe, RF remote control, and other custom feature sets.

Give yourself a break - stop struggling with tangled, twisted or dirty shore power cables - fit a Glendinning CRMA Cablemaster unit, and relax!

- **EASY TO USE** - Simply pull out the amount of shore power cable you need to make your connection, then when ready push the button and the cable will be retracted and stored on the reel.
- **'ZERO EFFORT' PULL-OUT FORCE** - Our patented drive motor mechanism disengages itself when the cable is extended. No heavy pulling!
- **COMPACT STORAGE** - Stores 50ft of 50amp (USA) or 20m of 63amp (EU) cable in the smallest possible area.
- **EASY TO INSTALL** - Deck, bulkhead or overhead mounting options.
- **MARINE GRADE DESIGN** - The Cablemaster™ product line is specifically designed for the marine environment - built to last! All electrical connections are completely sealed.

*Extend...Retract...Relax!*

Glendinning Products, LLC.

740 Century Circle, Conway, SC 29526-8274

t: +1 (843) 399-6146 | e: info@glendinningprods.com | f: +1 (843) 399-5005

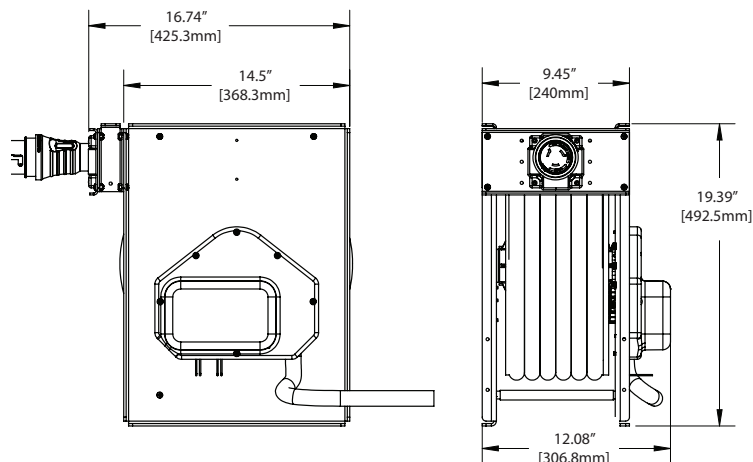
[www.glendinningprods.com](http://www.glendinningprods.com)



# CABLEMASTER™ - CRMA50/63

## Handling and Storage System for Shore Power Cable

### Specifications



VOLTAGE.....	12 or 24 VDC
OPERATING CURRENT.....	5-7 amps nominal 15 amp peak load
CABLE SIZE.....	50amp (USA) or 63amp (EU)
CABLE SPECIFICATION.....	#6AWG 50amp / #4AWG 63amp cable - 105degC rating with molded twist lock plug
CABLE LENGTH.....	50 ft (50amp) / 20m (63amp)
WEIGHT.....	62lbs
CERTIFICATIONS.....	UL355 approved, meets all CE requirements including ignition protection

### CRMA50 MODELS (USA)

Part Number	Description	Motor Voltage
CRMA50-12-63IW	CRMA50 12vdc 50a125/250 6/3Wiso (50ft 6AWG/3 core WHITE cable - for use with isolation transformer)	12
CRMA50-12-63W	CRMA50 12vdc 50a/125v 6/3W (50ft 6AWG/3 core WHITE cable)	12
CRMA50-12-64W	CRMA50 12vdc 50a125/250 6/4W (50ft 6AWG/4 core WHITE cable)	12
CRMA50-12-64Y	CRMA50 12vdc 50a125/250 6/4Y (50ft 6AWG/4 core YELLOW cable)	12
CRMA50-24-63IW	CRMA50 24vdc 50a125/250 6/3Wiso (50ft 6AWG/3 core WHITE cable - for use with isolation transformer)	24
CRMA50-24-63W	CRMA50 24vdc 50a/125v 6/3W (50ft 6AWG/3 core WHITE cable)	24
CRMA50-24-64W	CRMA50 24vdc 50a125/250 6/4W (50ft 6AWG/4 core WHITE cable)	24
CRMA50-24-64Y	CRMA50 24vdc 50a125/250 6/4Y (50ft 6AWG/4 core YELLOW cable)	24

### CRMA63 MODELS (EU)

Part Number	Description	Motor Voltage
CRMA63-12-43Y	CRMA63 12vdc 63a 250V 4/3 Y (20m 4AWG/3 core YELLOW cable)	12
CRMA63-24-43Y	CRMA63 24vdc 63a 250V 4/3 Y (20m 4AWG/3 core YELLOW cable)	24

### OPTIONAL ACCESSORIES:



**HAWSE PIPE** - Watertight polished stainless steel hawse pipe (Part No. 04079-CRM)



**RADIO CONTROL** - RF remote control for easy use while retracting cable 12V or 24V (Part No. 04154)

For more information contact our sales engineer or your local Glendinning dealer today!

Glendinning Products, LLC.

740 Century Circle, Conway, SC 29526-8274

t: +1 (843) 399-6146 | e: info@glendinningprods.com | f: +1 (843) 399-5005

www.glendinningprods.com

